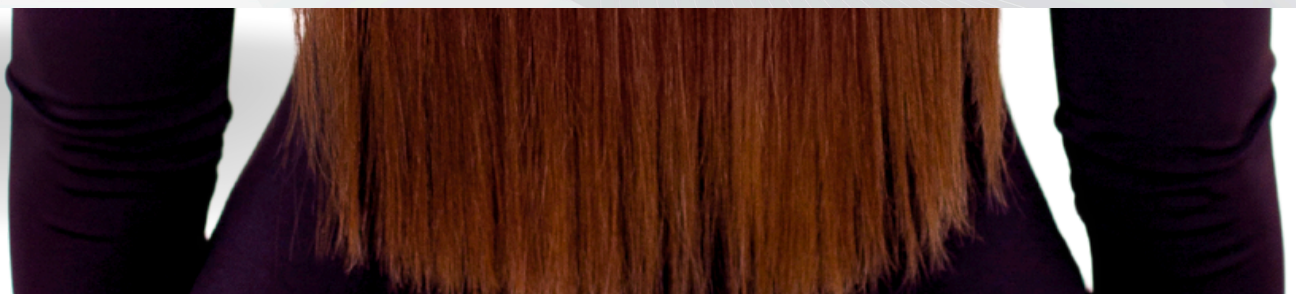




FERIASHCA
COSMETICS 



FERIASHCA

COSMETICS



Feriashca Cosmetics is an international hair care cosmetics brand that stands out for the excellence and quality of its products, imported directly from Brazil. With selected raw materials and natural ingredients, we offer exclusive hair treatments for customers who seek the best care for their hair. Our line of cosmetics includes proteins for hair straightening and a variety of products for daily care, such as shampoos, conditioners, hair masks, leave-ins and hair serum. Experience the difference of Feriashca Cosmetics products and discover the natural beauty of your hair.



NUTRI THERAPY BRAZILIAN PROTEIN



Nutri Therapy Brazilian Protein from Feriashca Cosmetics is the revolution in hair straightening. Our powerful hair protein offers intensive straightening for all hair types, including afro and super-resistant hair. With natural ingredients such as panthenol, hyaluronic acid, and macadamia, we achieve 100% hair straightening in the first application. Designed for professional use, our formula is completely free of formaldehyde and chemical derivatives, providing natural hair straightening with the highest technology. The result? Straight, hydrated, and shiny hair from the first application. Try Nutri Therapy Brazilian Protein and transform the beauty of your hair!

NUTRI THERAPY BRAZILIAN PROTEIN



STEP 1

Clarifying Shampoo from the Nutri Therapy Brazilian Protein line is ideal for deep cleaning of the hair. Its effective formula removes residues and impurities, preparing the strands for intensive hair straightening. Perfect to start your hair treatment with exceptional results.

STEP 2

Brazilian Protein from the Nutri Therapy line straightens even the most resistant hair from the first application. Its advanced formula with panthenol, hyaluronic acid, and macadamia leaves the hair completely straight and healthy.

STEP BY STEP - BRAZILIAN PROTEIN



Preparation of the Hair

1. Wash the hair with **Clarifying Shampoo** for a deep clean, removing all residues and impurities. Rinse thoroughly.
2. Towel dry the hair to remove excess water and finish with a blow dryer until the hair is 100% dry.

Application of Brazilian Protein

1. Divide the hair into sections to facilitate application.
2. Apply **Brazilian Protein** strand by strand, starting from the nape, distributing the product evenly with the help of a brush and fine-tooth comb.
3. Let the product sit for 40 to 60 minutes, depending on the hair's resistance.

Drying and Flat Iron

1. After the waiting time, rinse 50% of the product from the hair and blow dry on medium heat.
2. Flat iron thin strands 8 to 12 times, depending on the hair's structure and resistance. Use the flat iron at a temperature of 230°C (450°F).

Rinse and Finish

1. Wash the hair with shampoo.
2. Apply a moisturizing mask to ensure greater softness and shine. Leave it on for 10 minutes and then rinse again.
3. Finish with a leave-in and style the hair as desired.

HAIR CARE - POST STRAIGHTENING NUTRI THERAPY



Nutri Therapy Hair Care is the complete solution to maintain your hair straightening for much longer. Our care line includes shampoo, conditioner, mask, and leave-in, all formulated with special ingredients like panthenol, hyaluronic acid, and macadamia. These products can be used daily to ensure that your hair stays hydrated, nourished, and perfectly straight. The Nutri Therapy Hair Care line is designed to extend the effects of straightening, providing hair with intense shine and lasting softness. Experience the difference and keep your hair beautiful for longer with Nutri Therapy Hair Care.



STEP 1- NUTRI THERAPY SHAMPOO

Nutri Therapy Shampoo is the perfect choice for daily and effective care of straightened hair. Formulated with premium ingredients such as panthenol, hyaluronic acid, and macadamia, this shampoo provides a gentle yet deep clean, keeping the hair hydrated and nourished. Its special formula helps preserve the straightening effect, ensuring that hair remains smooth and shiny for longer. Ideal for daily use, Nutri Therapy Shampoo offers a luxurious experience and keeps your hair looking healthy and radiant.

STEP 2 - NUTRI THERAPY CONDITIONER

Nutri Therapy Conditioner is the ideal choice to complement the daily care of straightened hair. Enriched with premium ingredients like panthenol, hyaluronic acid, and macadamia, this conditioner provides deep hydration and effective detangling. Its advanced formula nourishes the strands, keeping them smooth, shiny, and perfectly aligned. By using Nutri Therapy Conditioner, you extend the straightening effect, ensuring silky and radiant hair day after day. Perfect for daily use, it offers a touch of luxury and exceptional care for your hair.



STEP 3 - NUTRI THERAPY HAIR MASK

Nutri Therapy Mask is an essential intensive treatment for straightened and demanding hair. Formulated with a powerful combination of panthenol, hyaluronic acid and macadamia, this mask provides deep hydration and revitalizes the hair, restoring lost softness and shine. Its advanced formula penetrates deeply into the hair fiber, strengthening and sealing the cuticle for long-lasting straightening and healthy-looking hair. Use the Nutri Therapy Mask regularly to keep your hair silky, hydrated and radiant, ensuring a smooth and smooth effect for longer.



NUTRI THERAPY HAIR LEAVE-IN

The nutri therapy leave-in spray is specially developed to detangle hair, leaving it soft, shiny and completely frizz-free. Can be used with damp or dry hair. Its advanced and powerful formula leaves your hair perfect daily



Suitable for all hair types, especially damaged, dull and brittle hair, it can be used daily thanks to its dual moisturizing and regenerating function.

STEP BY STEP - HAIR CARE NUTRI THERAPY

Wash your hair well with shampoo. Repeat the application if necessary and rinse well.

For daily use, apply the conditioner, let it act for 3 minutes and rinse.

Apply Leave-in to the entire length of your hair and finish as desired.

to eliminate frizz, apply the Nutri Therapy serum.

***For weekly use and intensive treatment, apply the mask, leaving it to act for 5 to 10 minutes and rinse.



FERIASHCA

COSMETICS

THANK YOU FOR YOUR VISIT TO OUR CATALOGUE.



PERCEPTION
LOG L.L.C.

Sao Paulo, Brazil
info@perception-Log.com
Whatsapp +5511998857171